



LEAF SPOT/RUST on CRABAPPLE

Call Now for a FREE Tree or Shrub Assessment

1.833.744.8733

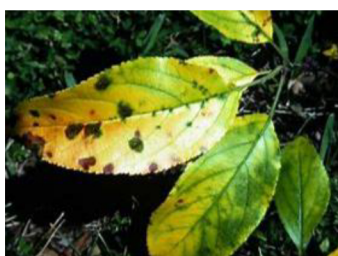
www.MonsterTreeService.com/North-Pittsburgh

Crabapple Got You Down?

Wondering why your crabapple is losing leaves so early?

DID YOU KNOW? Crabapples are one of our most favorite flowering trees in Spring, but this species can be prone to Leaf Spot and Rust Diseases.

Do your crabapple leaves look like this?



If so, there is something we can do to help your tree. If this disease is left untreated, the tree will begin to decline and can possibly die.

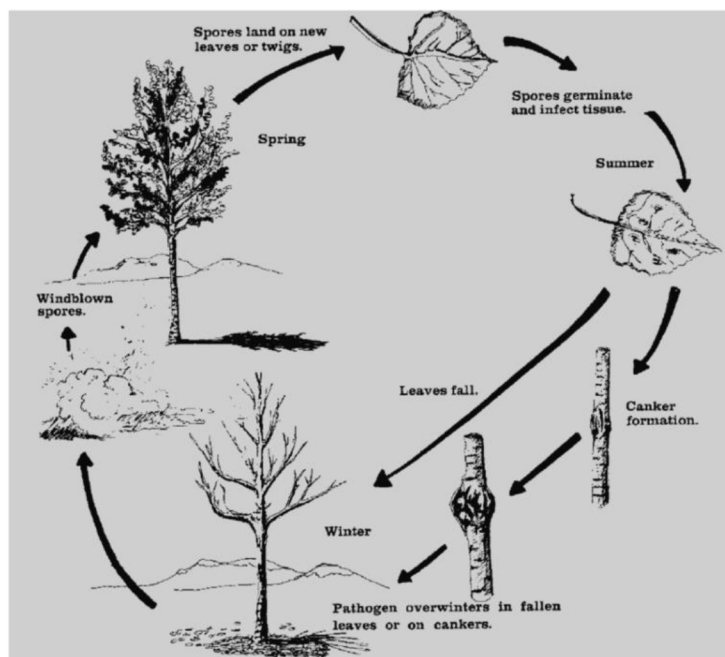
WHAT CAN YOU DO?

Remove fallen leaves prior to winter and remove. Do not use these leaves in other beds because the spores from this fungi can overwinter and splash onto foliage in Spring.

WHAT CAN WE DO?

Monster Tree Service can provide a pruning program for your crabapple. Proper pruning allows for better air circulation within the canopy. This can minimize disease spread by allowing better airflow to dry leaves after Spring rains. By providing a 3 year pruning program, your Monster Tree team can clearly identify branches of concern and remove them before they become a bigger problem.

Monster Tree PHC can provide Fall injections directly into your tree that relieve disease pressure causing additional decline. Trunk Injections are very effective and the treatment will last for one year. Providing optimal care throughout seasons will also encourage healthy and resilient trees more capable of handling troubling issues.



Special Pricing for Your Community

MTS of North Pittsburgh is offering special pricing for affected crabapple trees in your neighborhood this fall. Pricing is based on the DBH, Diameter at Breast Height, of your tree. For this community special, we are waiving the standard \$200 minimum and will come out and treat your affected tree at \$10/inch DBH. All requests for treatment must be made by 11/24/2021 to take advantage of this special discount.

Call Cindy today to be added to the schedule. 1-833-744-8733